



WALTON ON THAMES



£655,000

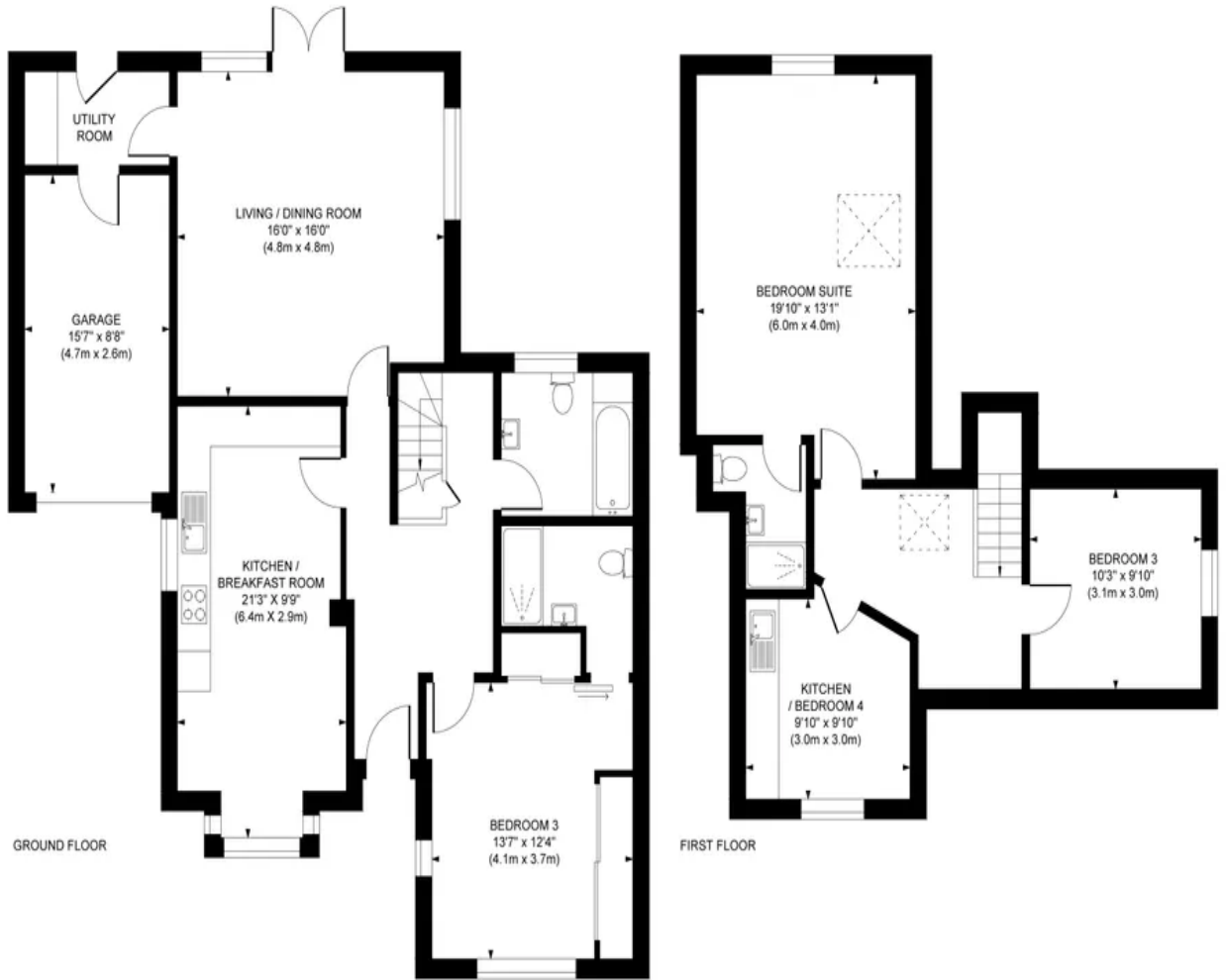
A fantastic opportunity to purchase this 4-bedroom detached home which offers accommodation over 3 floors and can be adapted to suit individual needs and must be viewed internally to appreciate the accommodation on offer, with open views over a park and tennis courts and ideally situated for Hersham village, Walton-On-Thames and West Molesey:

- * 4 Bedrooms * 3 Floors * Lounge overlooking gardens and park
- * Utility room * Kitchen/Dining room * 1 bathroom & 2 shower rooms
- * Integral garage * Detached garage/workshop
- * Driveway * Driveway with off street parking for 3/4 cars
- * Ideal for Hersham main line station

01932 859898

FREE NO OBLIGATION VALUATION
www.edward-barclay.co.uk

Approximate Gross Internal Area
1673 sq. ft / 155.00 sq. m



This plan is for layout guidance only. Not drawn to scale unless stated. Whilst every care is taken in the preparation of this plan, please check all dimensions, shapes and compass bearings before making decisions reliant upon them.

While we check all the quoted dimensions carefully they may be subject to a small margin of error and are intended as a rough guide to the accommodation offered. We caution against their use when ordering fitments or new carpets etc. These are correct to the best of our knowledge. We should bring to your attention, however, that the services to this property, together with any electrical circuits/heating systems and appliances, have not been tested by our company and therefore cannot guarantee their operating ability or efficiency. We would advise all interested parties to obtain verification from their solicitor or surveyor.