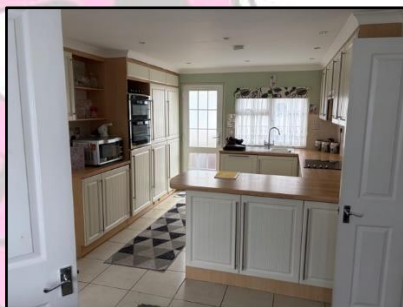




CHERTSEY



£230,000

Fantastic opportunity to purchase this double unit park home located on this popular small site ideally situated for Chertsey and Addlestone Town centres and must be viewed to be fully appreciated and benefits from:

- * Modern fitted kitchen/Breakfast room*19'2'' lounge/
- * dining room * Double walk-in wardrobes to the main bedroom *Driveway
- *Over 50's 2 dogs and 2 cats allowed *Available immediately no chain

The home really must be seen to fully appreciate the accommodation and location.

01932 859898

FREE NO OBLIGATION VALUATION

www.edward-barclay.co.uk

Double glazed door leading to the:

LOBBY: Built in coat cupboard

KITCHEN/
BREAKFAST
ROOM: 19'2'' x 12'2'' (including depth of units) Side aspect double glazed window, eye and base level units, sink/drain, built in double oven, hob and above, space and plumbing for a washing machine, integrated fridge & freezer, power points, part tiled walls, radiator, double glazed door leading to the garden.

LOUNGE/
DINING ROOM: 19'2'' x 11'2'' Front and side aspect double glazed windows, 2 radiators, feature fireplace, coving to the ceiling.

INNER
HALLWAY: Built I storage cupboard access to loft.

BEDROOM 1: 16'11'' x 9'6'' (max), side aspect double glazed window, radiator, power points, coving to the ceiling.

2 WALK IN
WARDROBES: Radiator, hanging space and storage..

BEDROOM 2: 9'4'' x 8'3'' (max) double glazed window, radiator, power points, coving to the ceiling.

BATHROOM: Side aspect double glazed window, white suite comprising toilet, wash hand basin inset into vanity unit, panel enclosed bath with shower above and fitted shower screen, radiator, part tiled walls.

OUTSIDE: Driveway with off street parking

While we check all the quoted dimensions carefully they may be subject to a small margin of error and are intended as a rough guide to the accommodation offered. We caution against their use when ordering fittings or new carpets etc. These are correct to the best of our knowledge. We should bring to your attention, however, that the services to this property, together with any electrical circuits/heating systems and appliances, have not been tested by our company and therefore cannot guarantee their operating ability or efficiency. We would advise all interested parties to obtain verification from their solicitor or surveyor.